



## STKI's IT as a Service (ITaaS) initiative

For a while" is a phrase whose length can't be measured. At least by the person who's waiting.  
— Haruki Murakami

STKI's IT as a Service (ITaaS) initiative





# What is IT as a Service?

2

IT delivery:  
Infrastructure &  
Operations as a Service





## IT as a Service Initiative destination

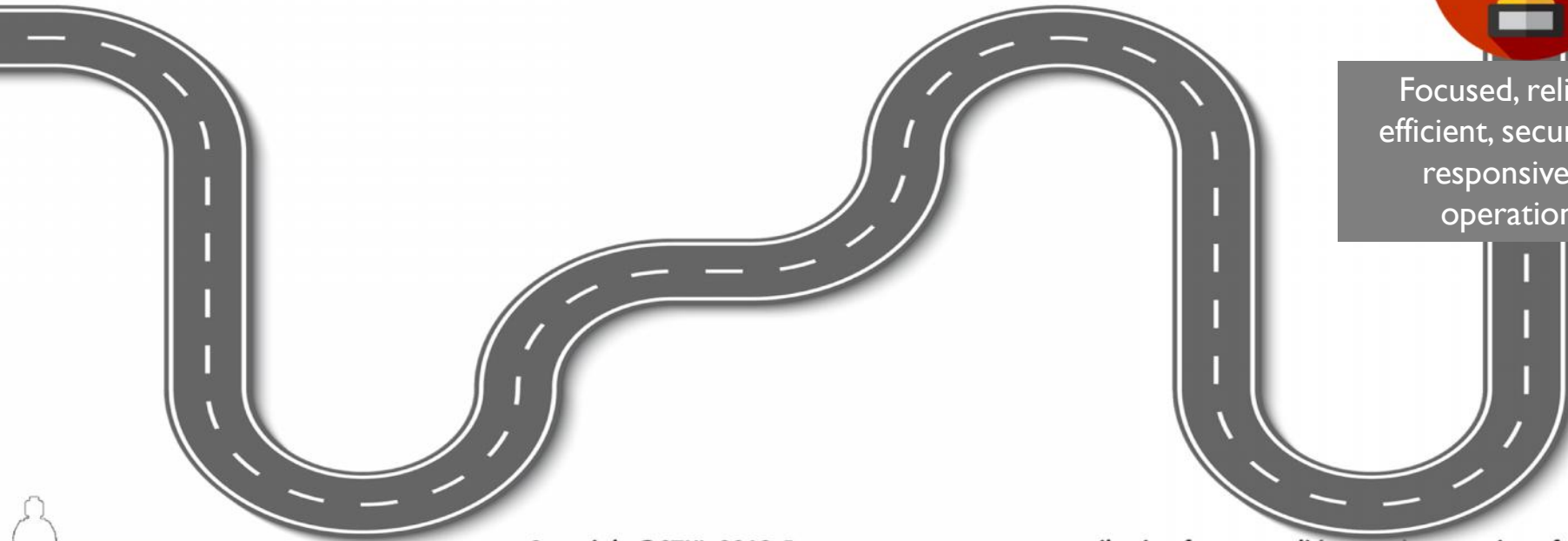
# Why?

Current IT delivery is considered expensive, in-efficient, rigid, old fashioned and holding back the business

Gaining the adaptive ability to **deliver IT at the speed of change**



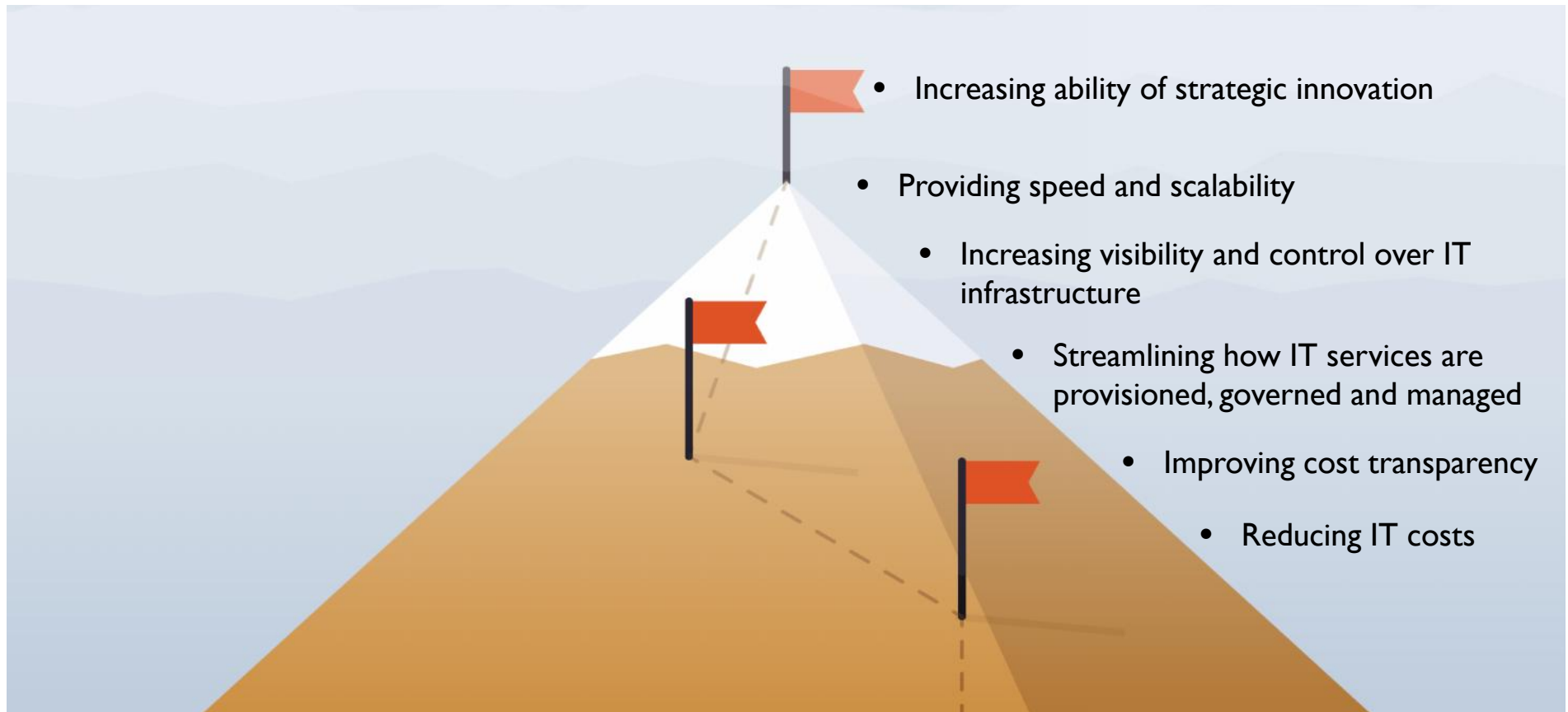
Focused, reliable, efficient, secure and responsive IT operations





# The core of ITaaS has not changed

4





So...  
What's different today  
than what we did for so many years?



# We will provide concrete recommendations

פורמט לבניית תוכנית עבודה

מטרה	היעד התחומי	תפוקות ארגוניות	מדדים להשגת היעד	אבני דרך מרכזיות	לו"ז התחלה	Q1	Q2	Q3	Q4	משאבים (תקציב, כ"א)

So that you can copy and paste it to your plan



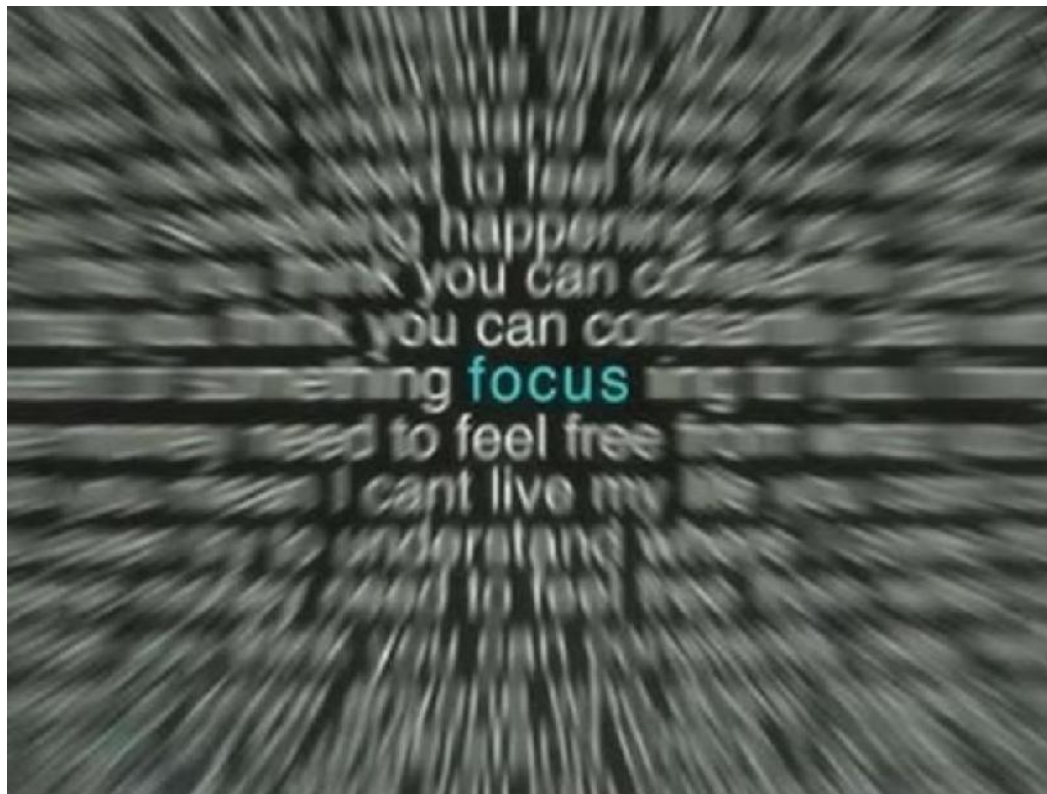
And not leave it too vague







How can ITaaS become focused?  
By setting up goals and establish metrics!!







ITaaS



Set availability  
reliability metrics



Set IT support  
metrics



Set business agility /  
responsiveness metrics



Set delivery  
efficiency metrics



Set cyber security  
metrics



Trek name:

# Define ITaaS goals and metrics / measurements



Availability, service & efficiency metrics are common  
 Business responsiveness and cyber metrics are much less common

10



Don't stay with a metric too long



נייר עמדה  
 מדידה בתחום סייבר  
 גרסה: 1

# MEASURING THE SUCCESS OF DEVOPS

## 2016 Server Ratios - Windows

Number of Windows Servers (logical) per System member

Per FTE	All Win Servers	Prod Win Servers
25 percentile	100 servers	67 servers
Median	125 Servers	75 Servers
75 percentile	222 Servers	129 servers

- Server is either physical or virtual
- This includes SBC/VCI (Citrix/WTS/Jetro) support
- For dev opment environments ratios can grow up to 800 servers per FTE
- Organizations with 100% identical servers in branches can get ratios up to 1500 servers per FTE
- Some times (separate) virtualization team gives services to both Windows and Linux

Source: STKI



Copyright@STKI\_2018 Do not remove source or attribution from any slide, graph or portion of graph



Define role : "business technology availability"

One part of his role : "handle failures"



Measure availability objectively with user experience tools



Copyright@STKI\_2018 Do not remove source or attribution from any slide, graph or portion of graph



Another important role: "change & maintenance manager"





The "business technology availability" person is the "change & maintenance manager"



Only "availability minded gatekeeper" can improve ITaaS reliability

Copyright@STKI\_2018 Do not remove source or attribution from any slide, graph or portion of graph



# STKI's DevSecOps measurement manifesto:

Measure ops  
(availability, etc...)

Measure productivity\quality

Measure cyber







## STKI's DevSecOps measurement manifesto:

Measure productivity\quality along with cyber

Measure ops along with cyber

Measure cyber

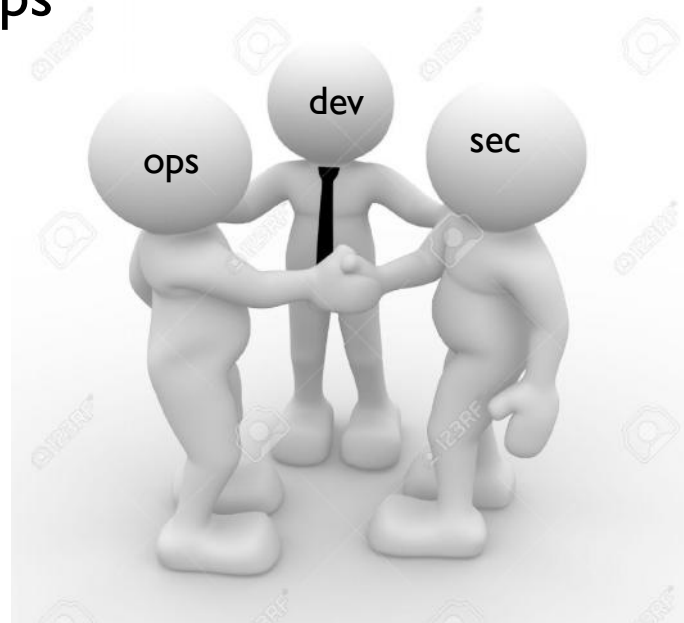




## STKI's DevSecOps measurement manifesto:

Measure productivity\quality along with cyber & ops

Measure ops along with cyber & dev productivity



Measure cyber along with ops & dev productivity





**Optimize the foundation**

A set of icons including a fuel pump, three people, a blue arrow, a green gear, and a green cow.

**Set Open API**  
Re-build integration platform

A set of icons including a fuel pump, three people, a blue arrow, a green gear, and a purple cow.

**Set DC new principles**

A set of icons including a fuel pump, three people, a blue arrow, a green gear, and a green cow.

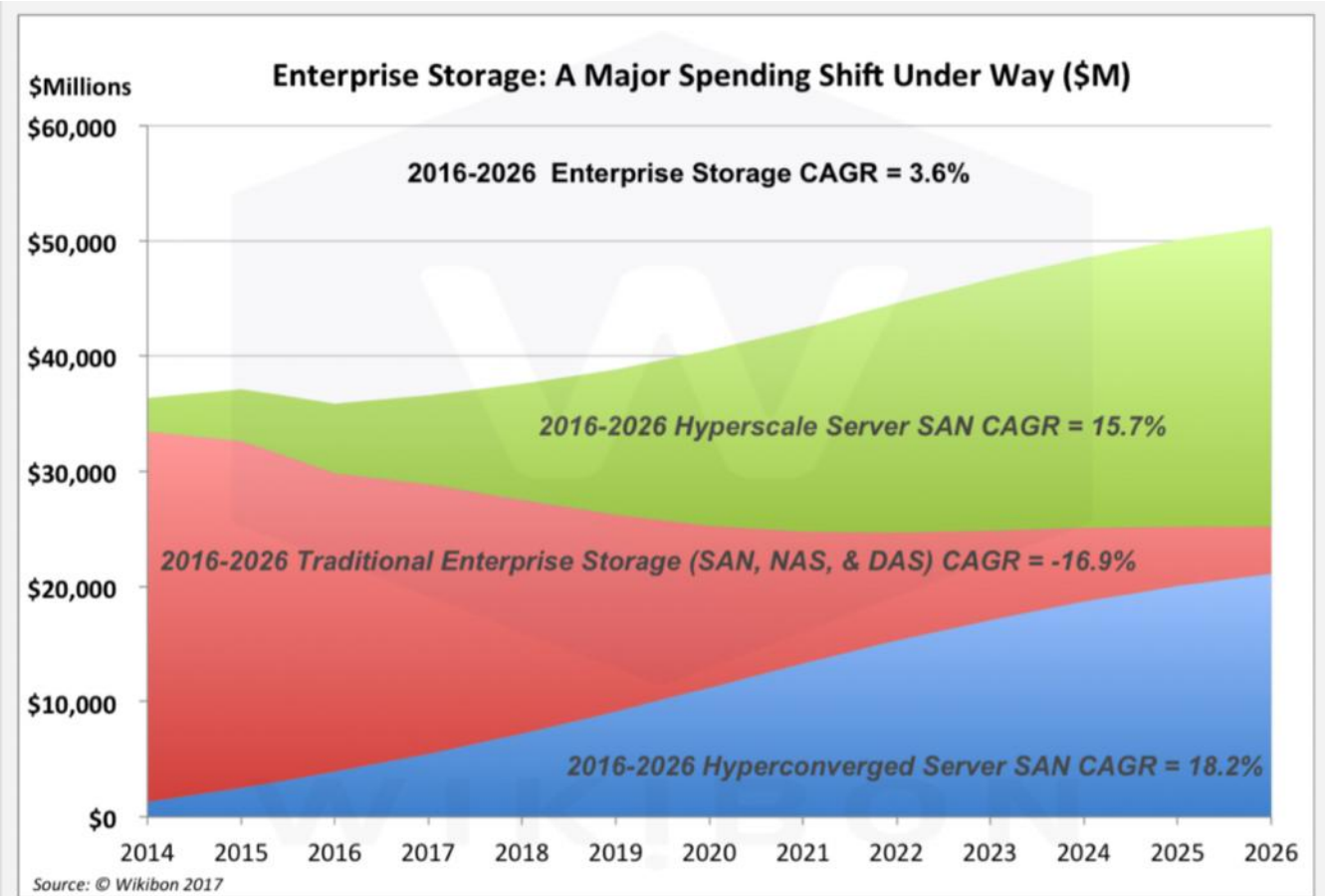
**Build container infrastructure**

A set of icons including a fuel pump, three people, a blue arrow, a green gear, and a green cow.

Trek name:  
**Build new Data Center**



### HCI – hyperconverged infrastructure



Source: wikibon

**Figure 2 - Worldwide Revenue Projections for Enterprise Storage 2014-2026 (\$M)**

Source Wikibon 2017

on of graph





# Hyperscale infrastructure

Based on basic standard HW components setting up specific SW (sometimes opensource) configuration for large scale computing. Integrator & customer check if this specific server will work with this specific network HW \ opensource network OS, specific disks work with specific storage file system, etc.

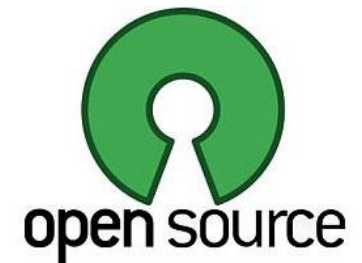


Copyright@STKI\_2018 Do not remove source or attribution from any slide, graph or portion of graph



## Set DC new architecture principles:

- Build new technology lab preferably on cloud
- Software defined based (programmable) technology
- Maximize open source business value
- Strive towards immutable infrastructure (servers)







# Immutable infrastructure

In a traditional mutable server infrastructure, servers are continually updated and modified in place.

In immutable infrastructure servers are never modified after they're deployed.

If something needs to be updated, fixed, or modified in any way new servers built with the appropriate changes are provisioned to replace the old ones.



Immutable infrastructure with Docker and containers

```
immutable
new server
```

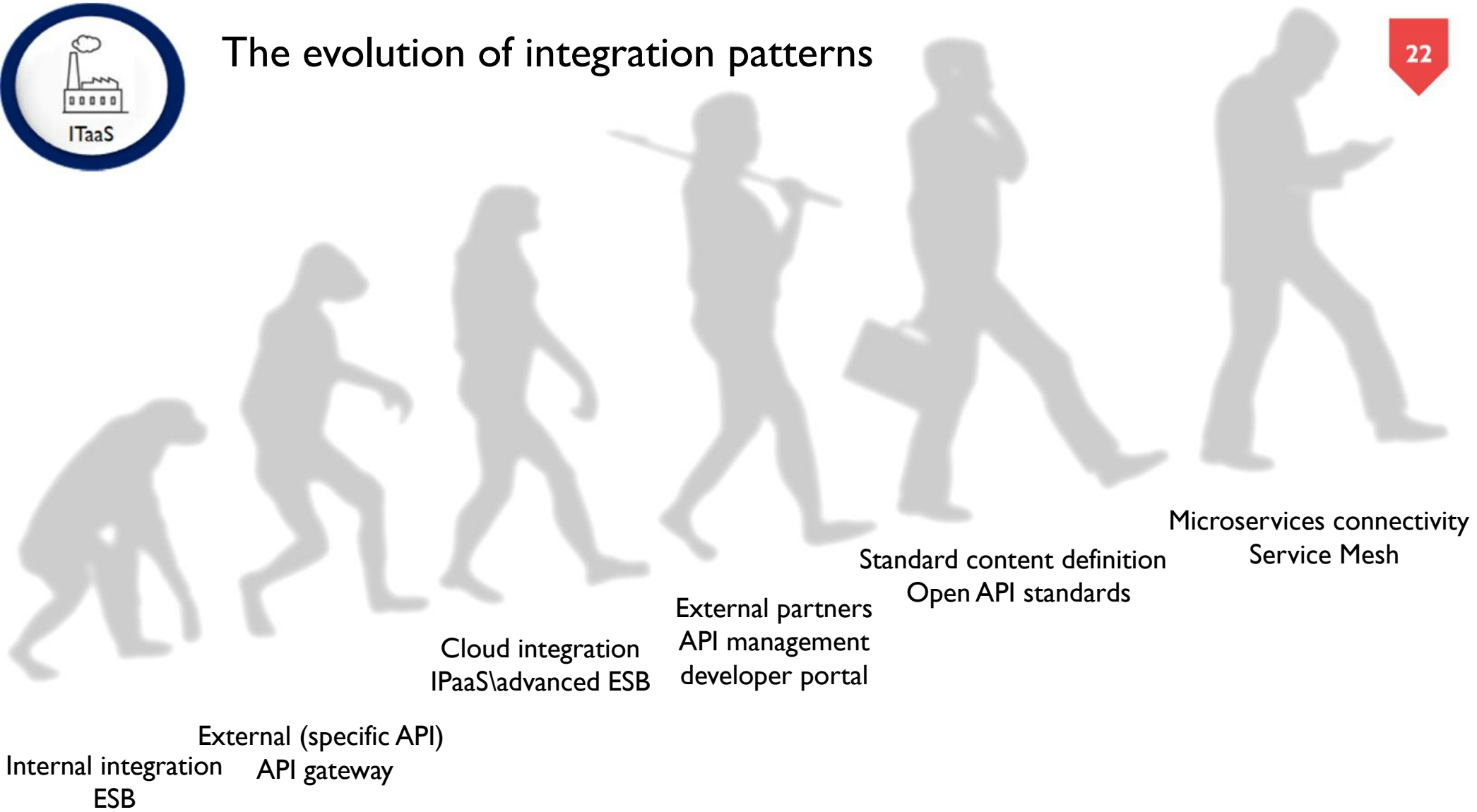
Pets vs. Cattle

Source: digitalocean

Copyright@STKI\_2018 Do not remove source or attribution from any slide, graph or portion of graph



# The evolution of integration patterns

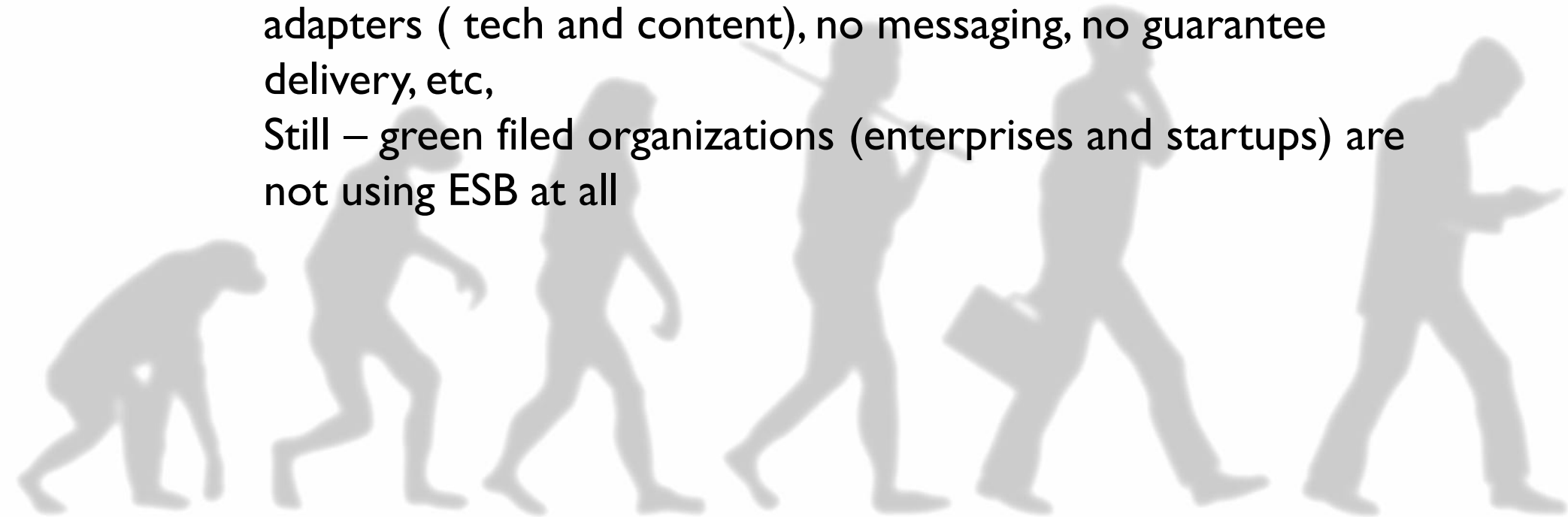


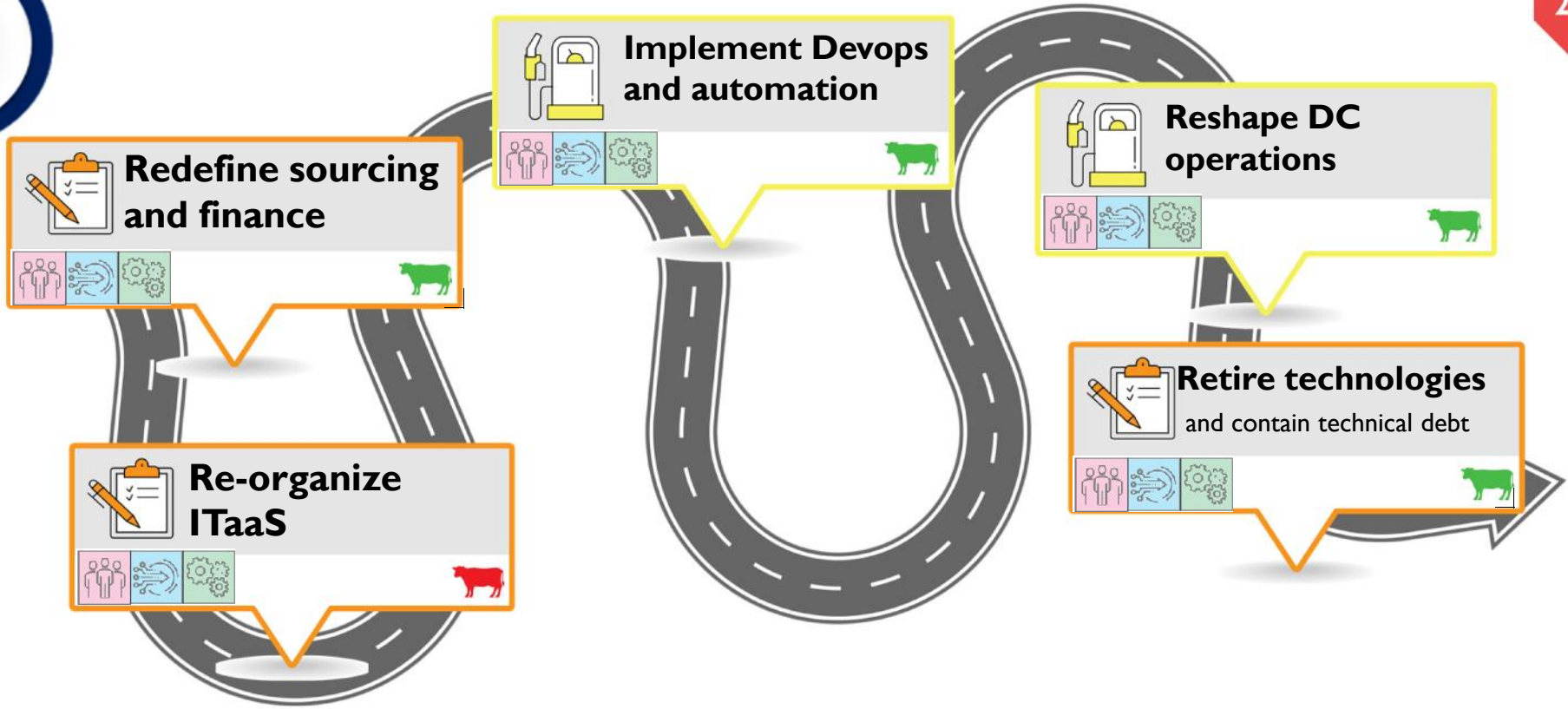


## Will API management replace ESB?

It shouldn't – no orchestration, no transformation, no adapters ( tech and content), no messaging, no guarantee delivery, etc,

Still – green filed organizations (enterprises and startups) are not using ESB at all





Trek name:

# ITaaS Operations, organization and processes

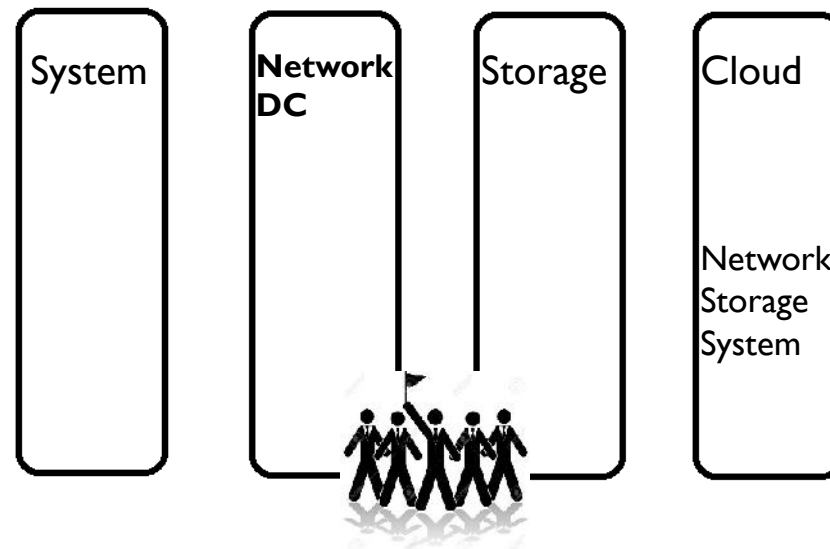


## Re-organize ITaaS: new team for new technology\domain

25

- New dedicated team (for converged, cloud, devops, etc.) , with skills differentiated, into the same department

## Easy but BAD!!



Copyright@STKI\_2018 Do not remove source or attribution from any slide, graph or portion of graph





Bad habits are like a comfortable bed, easy to get into, but hard to get out of.

(Anonymous)

izquotes.com

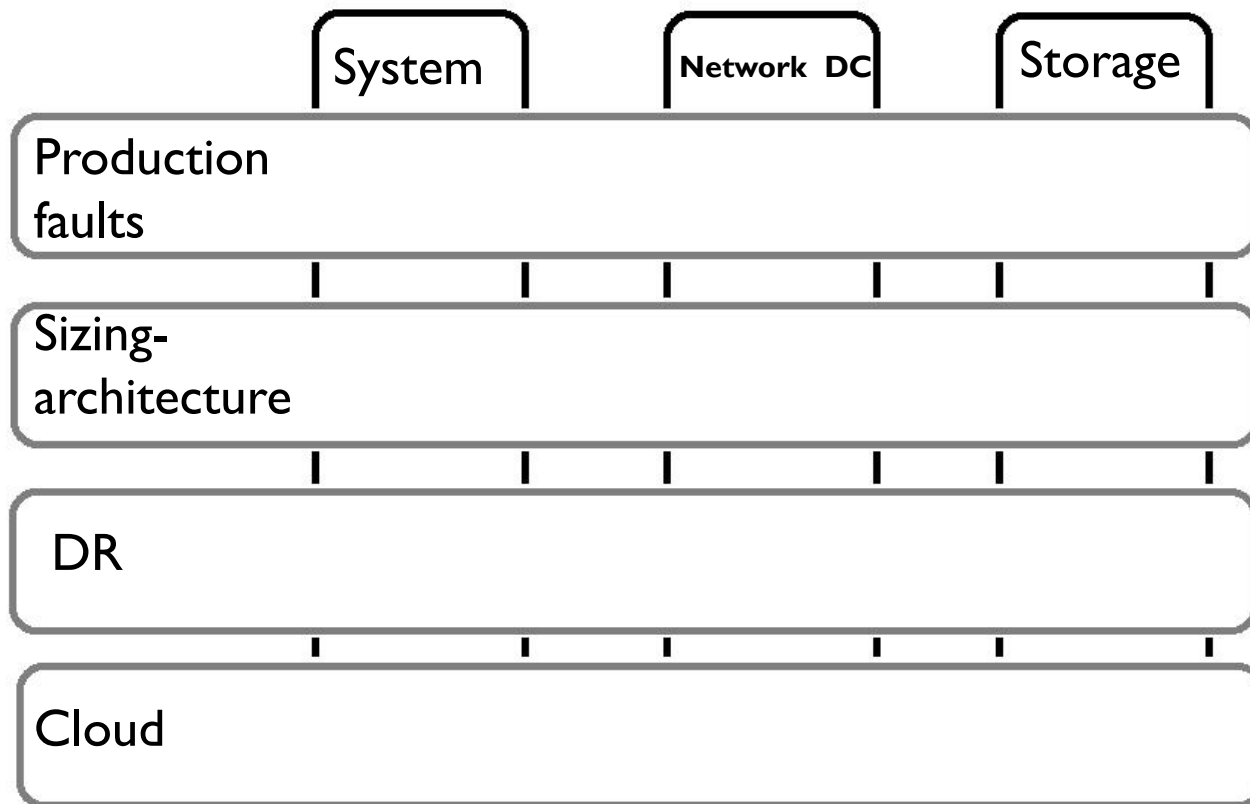






Re-organize ITaaS: combine old teams for delivering new technology\domain

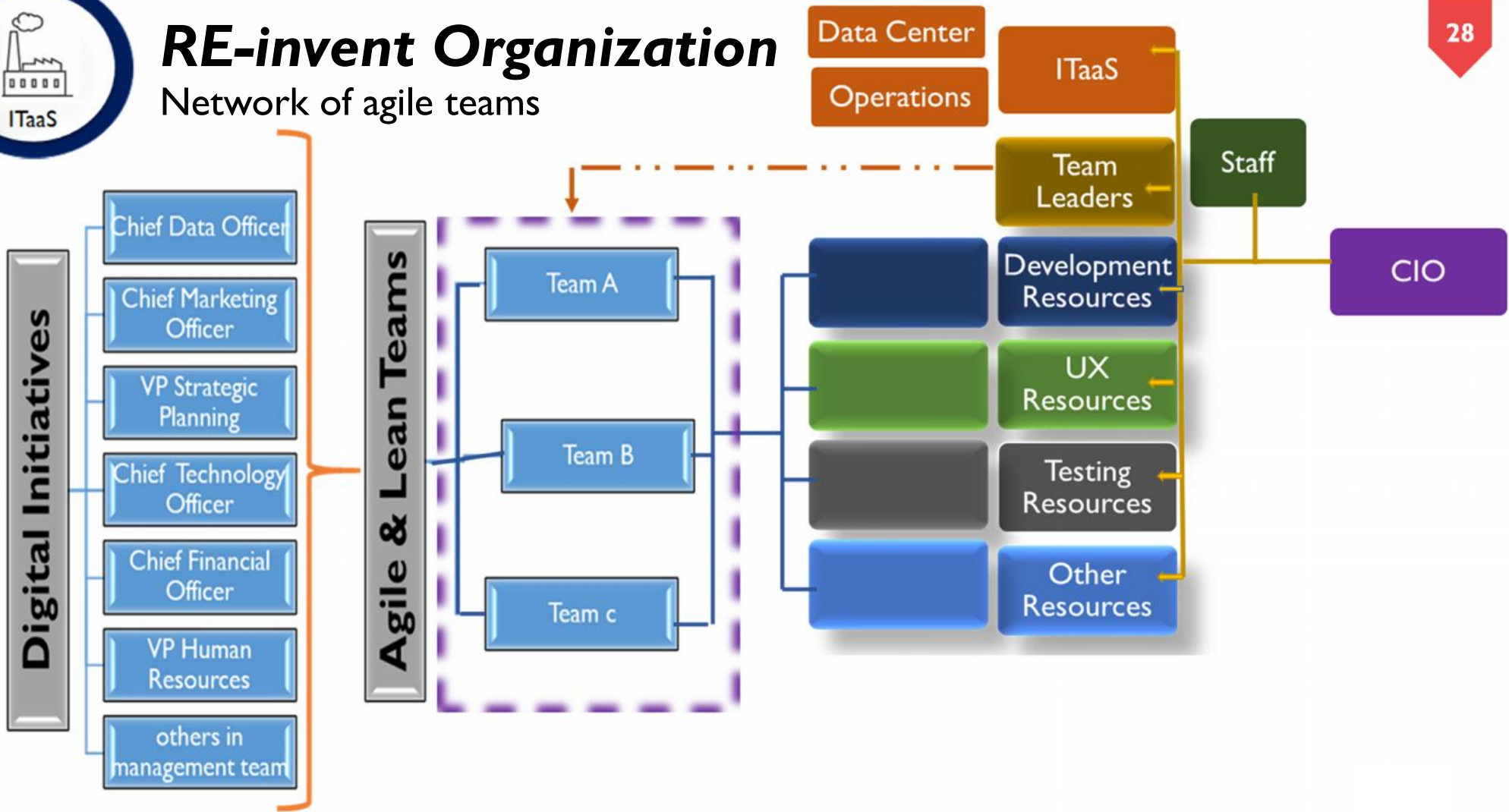
# Challenging but GOOD!!





# RE-invent Organization

## Network of agile teams



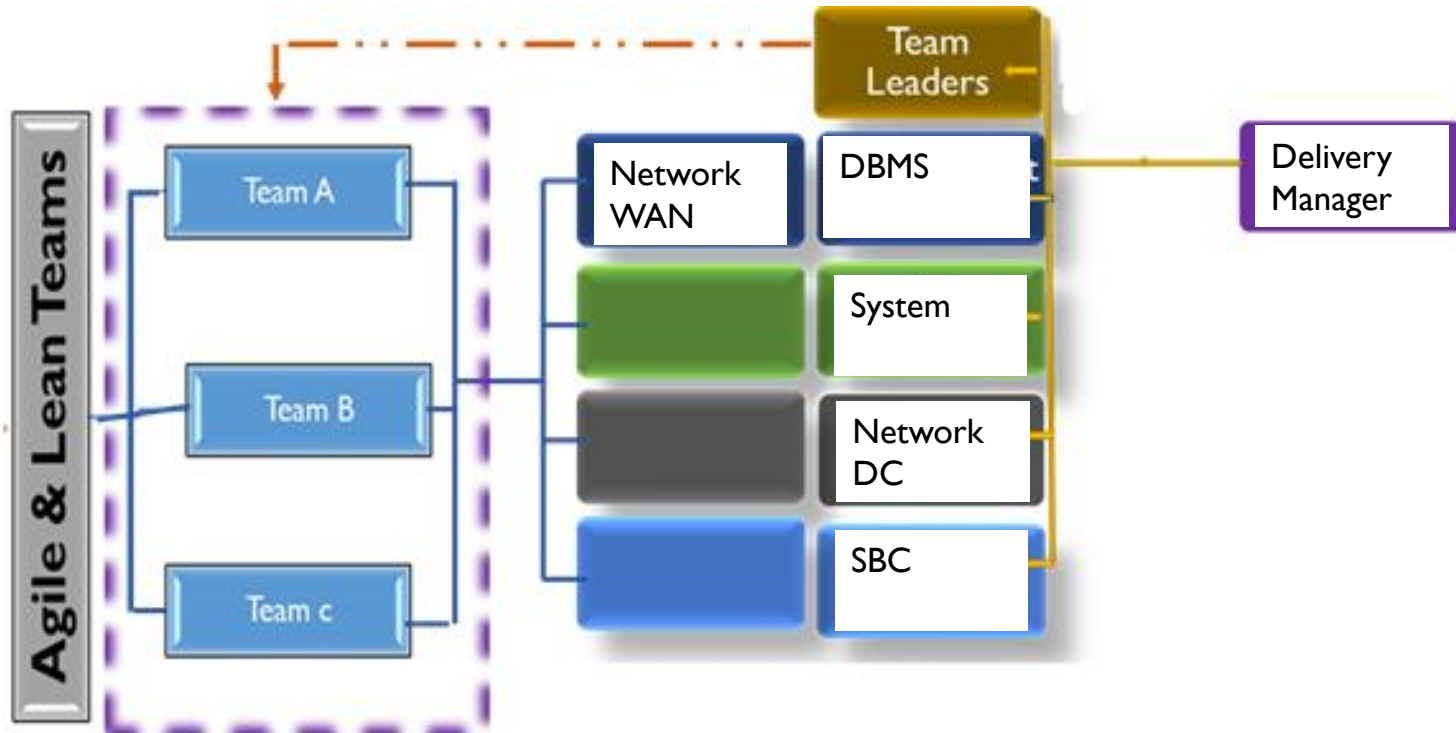
Copyright@STKI\_2018 Do not remove source or attribution from any slide, graph or portion of graph



# RE-invent Organization: ITaaS

## Network of agile teams

29





# New organizations challenges

By Marty Appel

## It's a whole new ball game!

About the only thing that hasn't changed in baseball during the past 30 years is "Four balls you're on" and "Three strikes you're out!"

"I have many bosses"

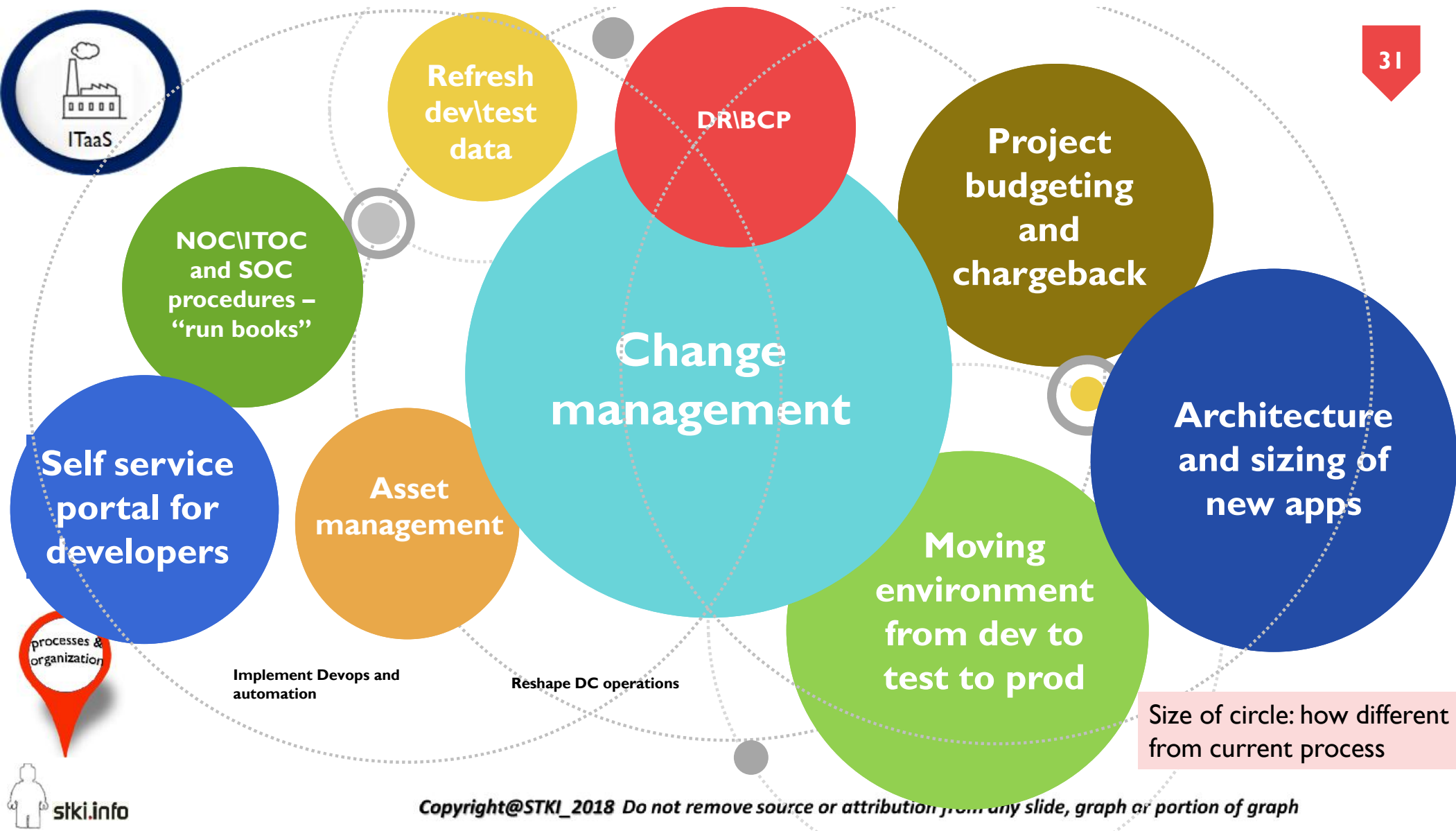


What will managers do?



- learning and innovating
- network of agile teams (sharing knowledge)
- people "create followers" to grow in influence
- lead by orchestration
- culture of risk-taking
- teams and responsibilities defined but roles and titles change regularly
- project based





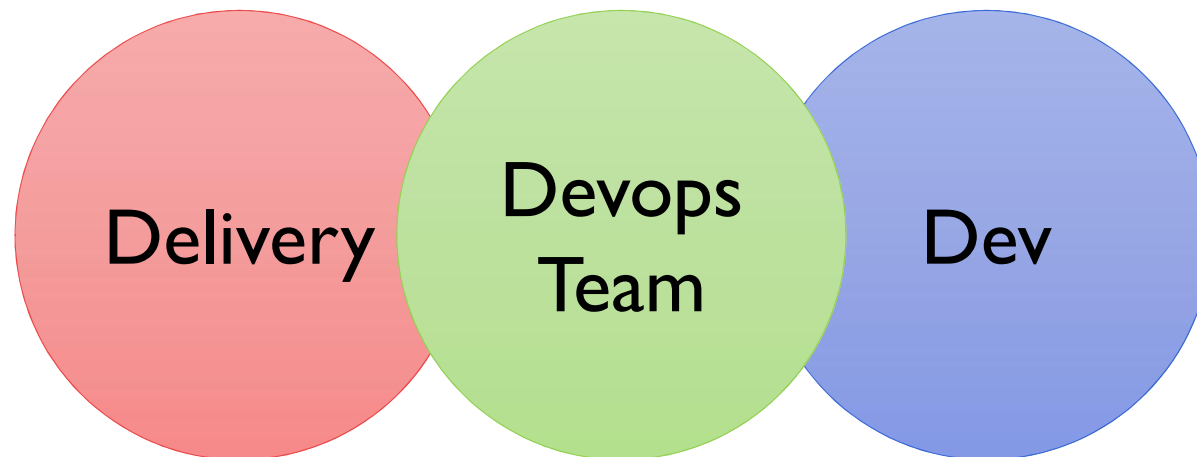


## The CI/CD (devops) team

32



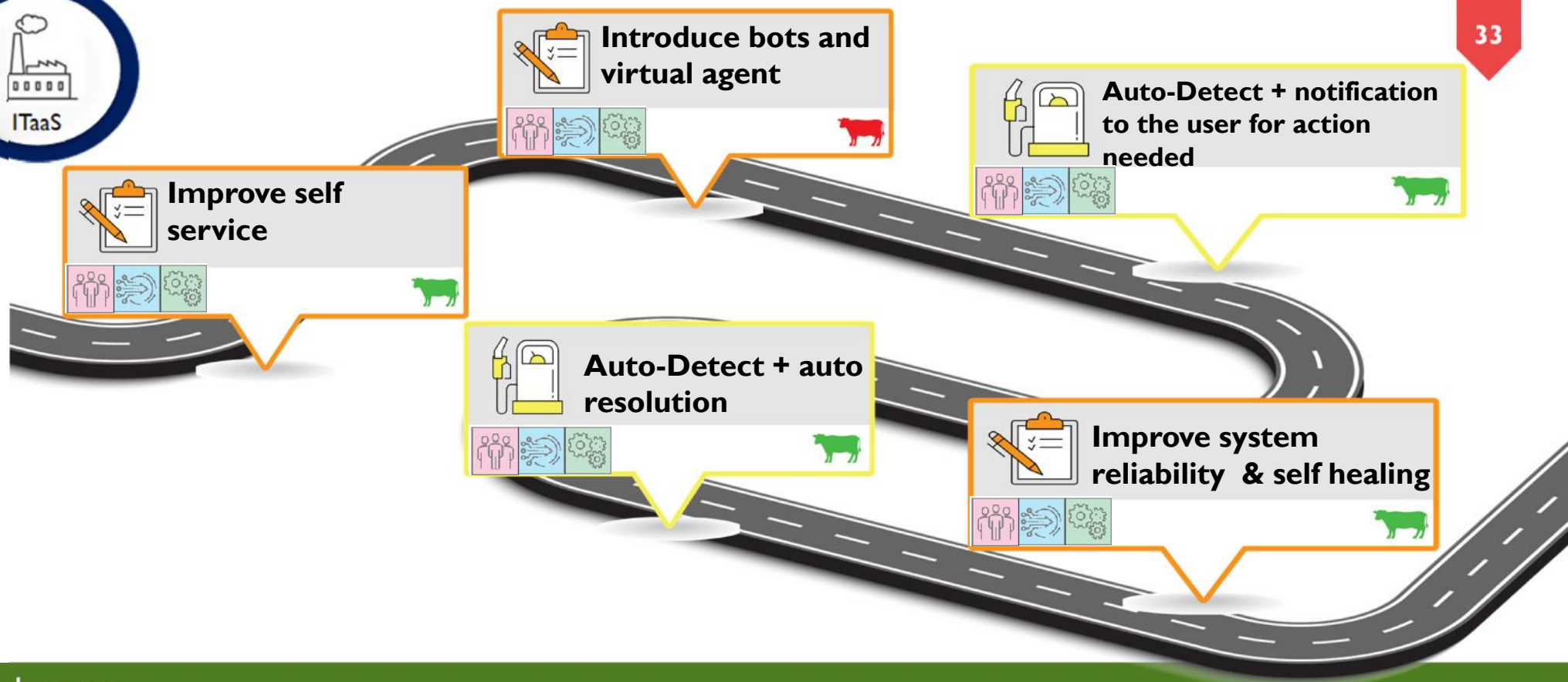
Use the existing team that builds/refreshes test environments as the foundation for CI/CD team



Copyright@STKI\_2018 Do not remove source or attribution from any slide, graph or portion of graph





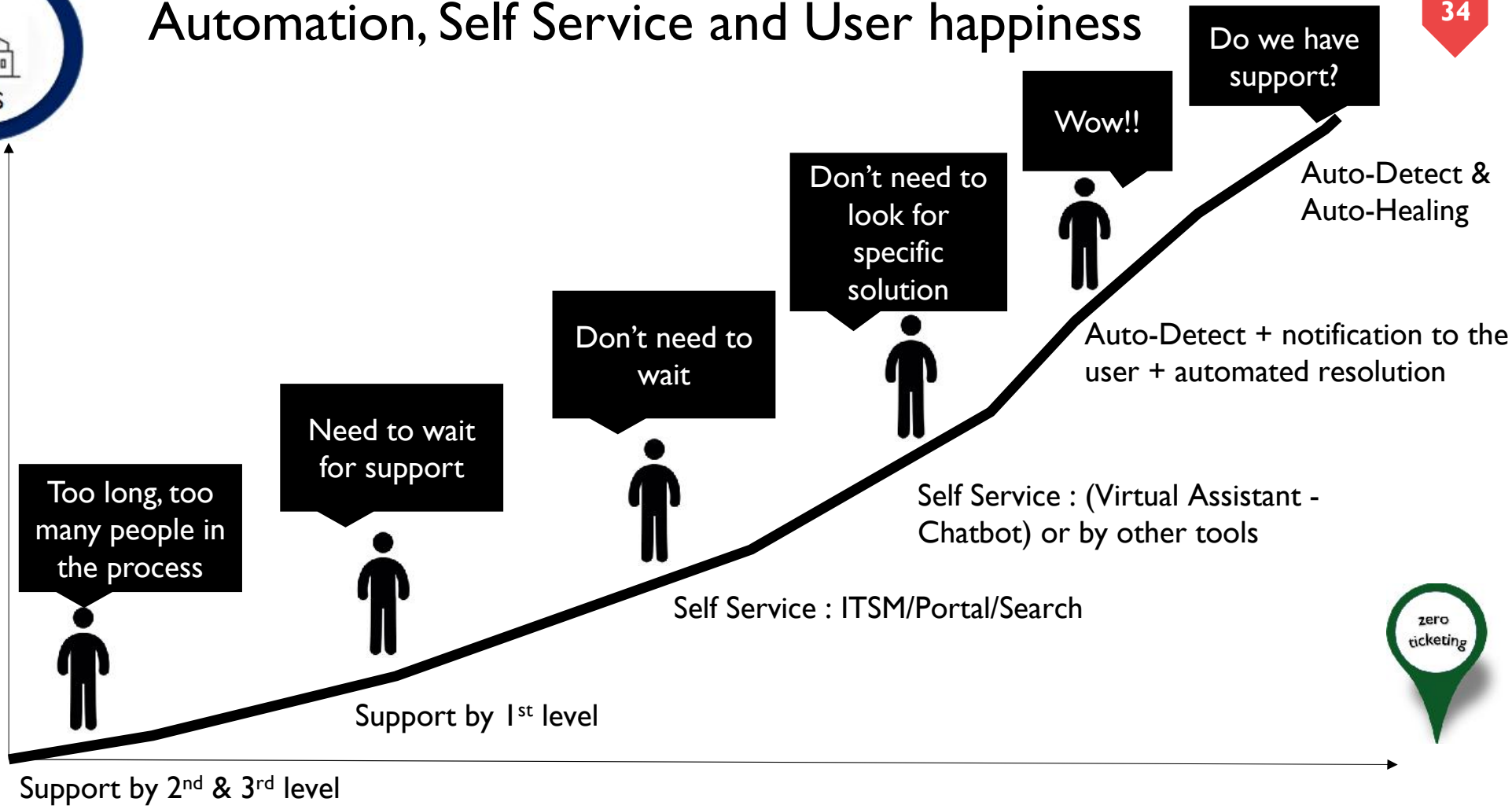


Trek name:  
Zero ticketing

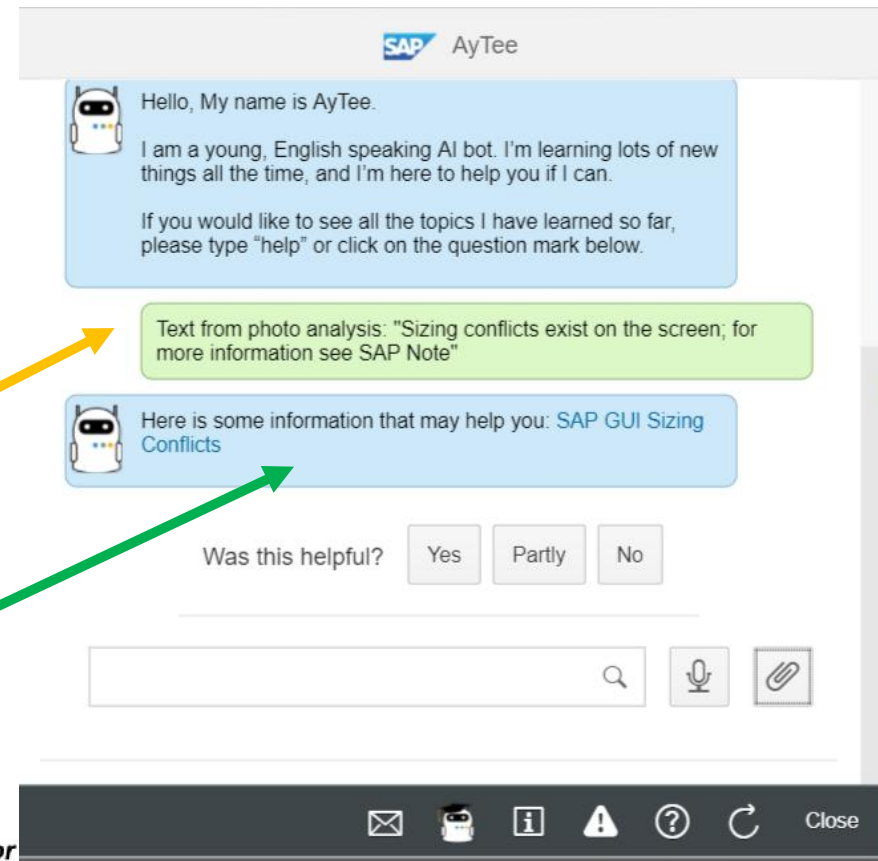
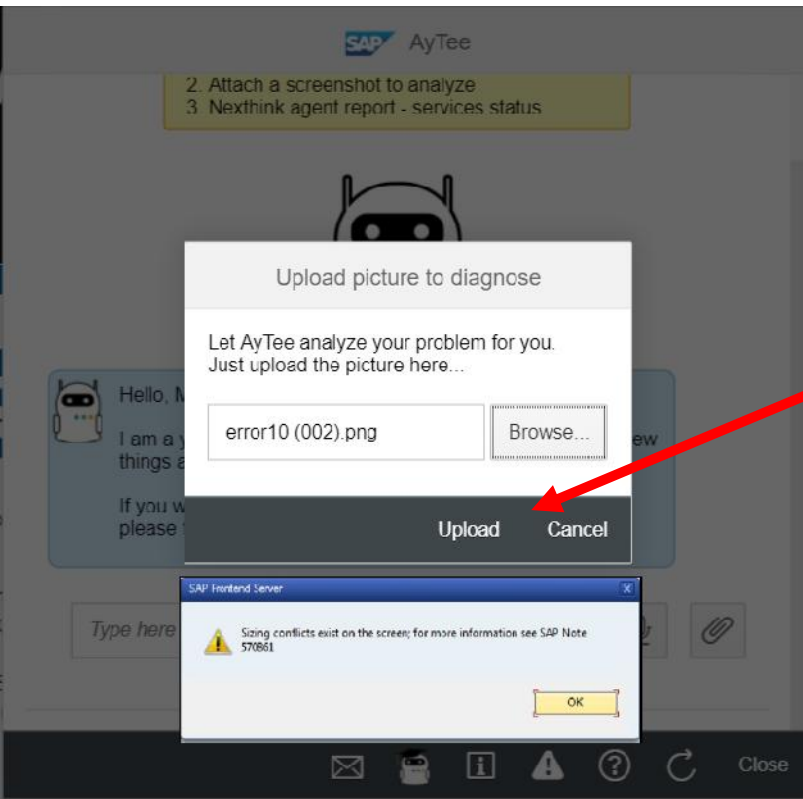


# Automation, Self Service and User happiness

34



# User uploads a screenshot of an error (ocr...)



Known error is matched with a solution

AyTee suggests a solution



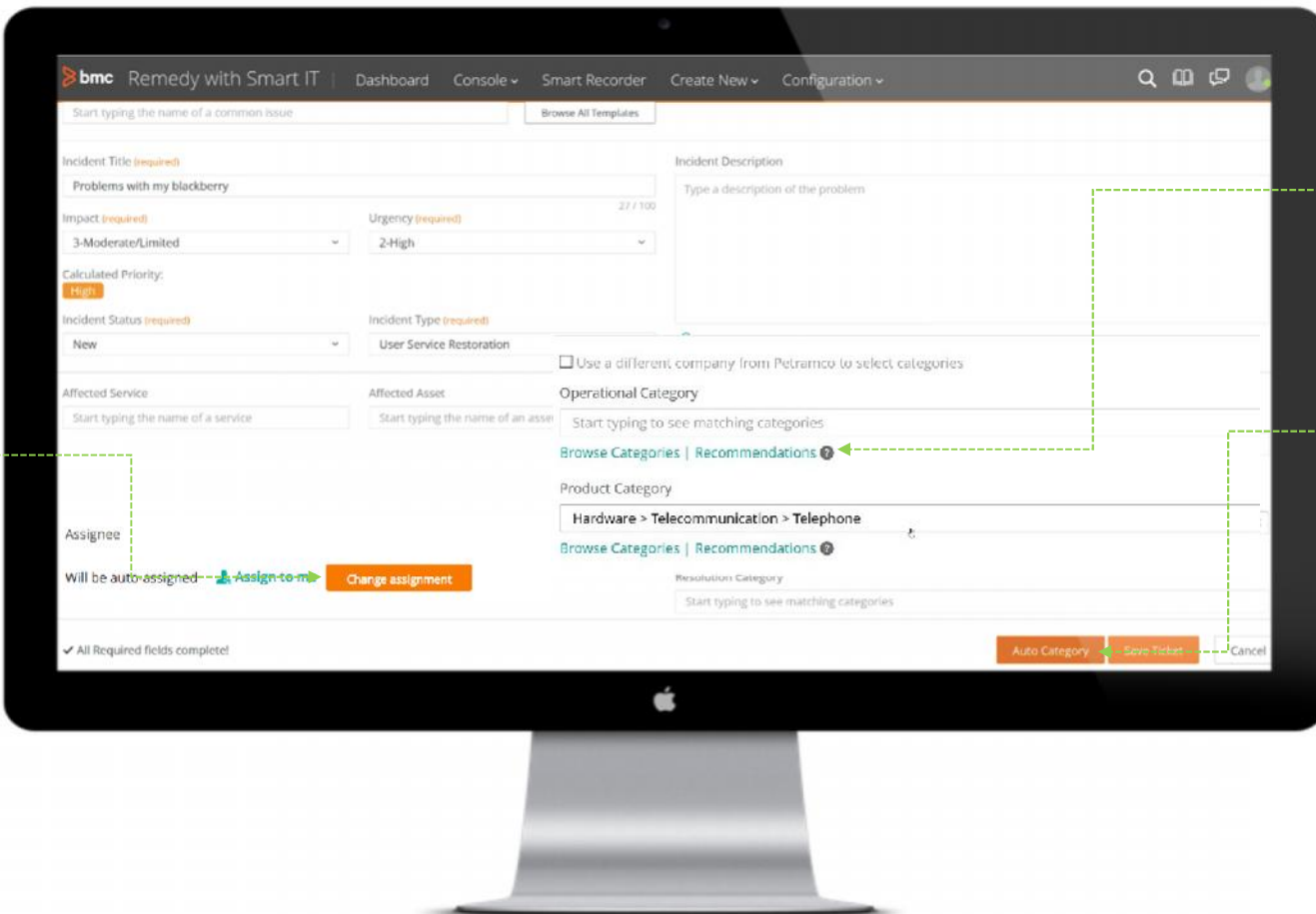


# Remedy Powered By Cognitive

Auto-assign the incident based on past assignments

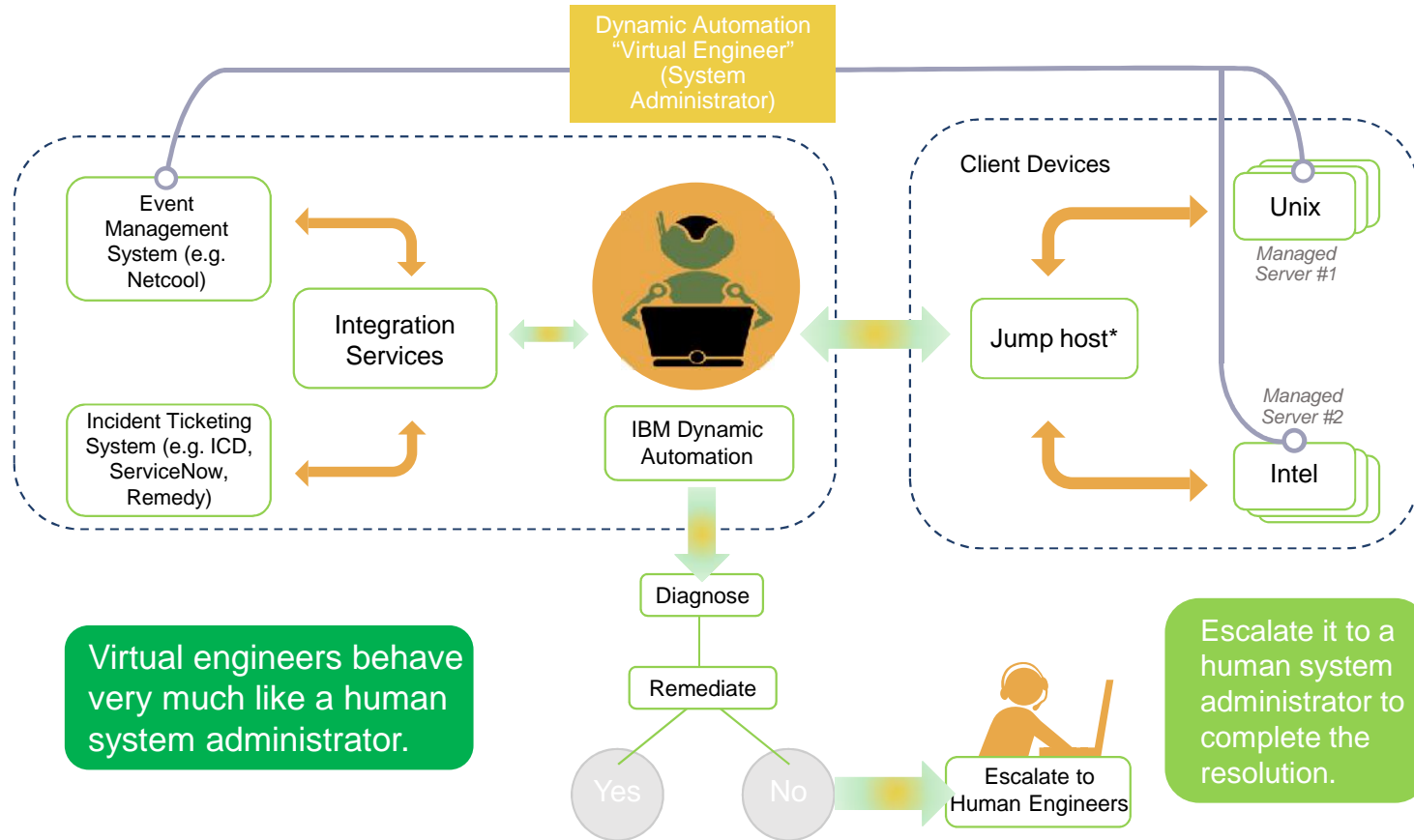
Auto-Route incidents

Auto-Classify Incidents to specific product and ops categories for more accurate analytics



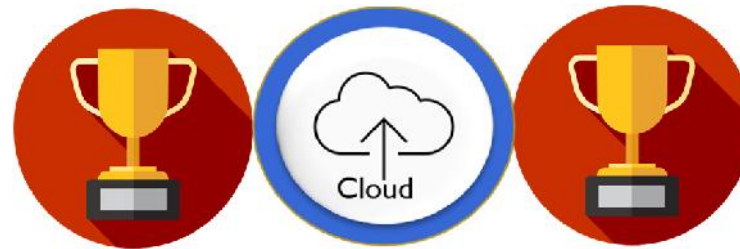


Dynamic Automation integrates into existing ITSM tools to automate use cases on platforms, database, middleware apps, network, and storage





## Cloud technologies and processes are part of ITaaS practice enabling true hybrid cloud



Focused, reliable, efficient, secure and responsive to business needs

Zero ticketing

Supporting development





# GOOD LUCK.

HAVE FUN! MAKE CHANGE HAPPEN!

Act 1

EXPLORE

Act 2

IMAGINE

Act 3

ATTEMPT

**Pini Cohen, MBA**

[pini@stki.info](mailto:pini@stki.info)

054 70 000 23  
09 790 7000